

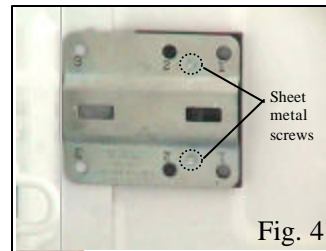
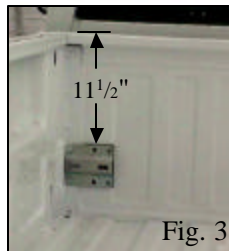
FRONT ANCHOR INSTALLATIONS

1. Prepare the Guide Plates and Anchor Plates for installation by using the adhesive strips provided to attach the black plastic spacers to the Guide Plate and Anchor Plate as shown in Fig. 1 & 2.

2. Position the silver Guide Plate such that holes marked "3" are toward bed side wall, the top edge is 11 $\frac{1}{2}$ inches down from the top of the bed rail, and the outside edge is 1/8" in from corner. (Fig. 3 & 4) Set plate parallel to bed floor and secure in place with masking tape.



3. Drill 1/16" pilot holes in bed front wall through the two small holes in guide plate. If a stabilizer bar (SB-100) is being installed (recommended), Remove Guide Plates and attach stabilizer bar per instructions enclosed with bar. If no stabilizer bar is used, insert and tighten the small sheet metal screws to secure Guide Plates to bed, then remove tape. Otherwise, do this after the bar is attached.

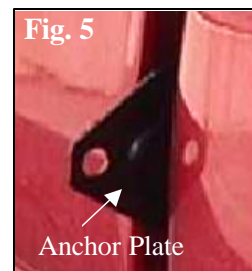


4. Once both Guide Plates are attached to the bed with the small sheet metal screws, use the Guide Plates as drill guides and drill 7/16" holes through the bed front wall through hole pairs marked 1 & 3. (Fig. 4) **Caution, do not allow drill bit to strike cab.** Place a board or some other barrier between bed and cab while drilling.

5. Slip the black Anchor Plates (with spacers attached) between the bed & cab and start all four 1" X 3/8" bolts through Guide Plate and bed, into threaded holes in Black Anchor Plate. **Important:** Start all 4 before tightening.

(*Hint: These will start much easier if you run the bolts through the plate prior to installation to clear the paint from the holes.*)

6. Once all 4 bolts are started, remove the sheet metal screws, then tighten all bolts just until all parts draw snugly together.



IMPORTANT NOTE: This plate will roughly follow the contour of the bed front. Since this is a "universal" plate, designed to fit a range of trucks, it will not follow the contour perfectly, however, all parts will draw together when tightened down.

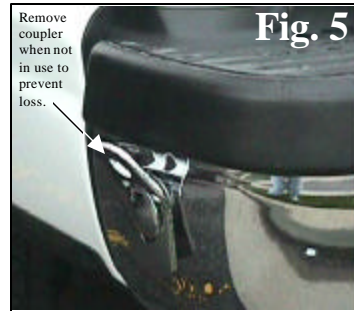
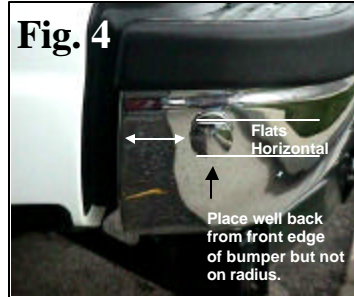
See reverse side for rear anchor installation.

REAR ANCHOR INSTALLATION

NOTE: Rear anchors are installed in the end of the bumper. When properly installed, the bumper mount tiedowns provide excellent performance and a clean attractive appearance. There is no precise mounting location since a variety of bumpers may be installed. The general guidelines are as follows:

1. Mounting location should be as flat & vertical as possible.
2. Be sure no moldings or bumper caps interfere with the removable coupler.
3. **Warning: Mounting near the front edge of bumper could result in bumper twist and poor performance.** Choose a location as far back as possible on the flat end of the bumper. Don't go into the radius.
4. Check back side of selected mounting location to ensure adequate access for tightening the nut, then center punch and drill a $\frac{1}{8}$ " pilot hole. Enlarge to $\frac{1}{2}$ " and install Anchor Bolt with 2" fender washer, lock washer & nut.

Flat edges of Anchor Bolt must be horizontal for proper operation. Be sure to remove slide on coupler when unloading camper to avoid losing them.



WARRANTY INFORMATION

TERMS OF THE WARRANTY:

All products manufactured by Happijac Co. are warranted to the retail customer for one year from date of purchase against defects in material or workmanship. Any defective part(s) will be repaired or replaced (at Happijac's option) without charge, when returned transportation prepaid. There are no other expressed warranties except as set forth above and any implied warranties are limited in duration to that of the expressed warranty. This warranty does not cover any damage due to misuse, negligence, or accidents. There is no warranty covering consequential damages, incidental damages, or incidental expenses including damage to property. This warranty gives you specific legal rights. You may have other rights which may vary from state to state.

WARRANTY CLAIMS:

All defective material must be returned to the factory via prepaid shipment. Upon inspection and determination of claims warranted, the factory will repair/replace the material at no charge and return the repaired/replaced material to the customer with delivery charges prepaid by Happijac via common carrier of Happijac's choosing. Upgrades and changes to shipping mode resulting in additional shipping costs shall be at customers expense.

**HAPPIJAC** company
505 N. Kays Drive, Kaysville UT 84037
Phone: (801) 544-2585
Fax: (801) 546-5241
Email: happijac@happijac.com
Web Address: www.happijac.com