

## REAR ANCHOR INSTALLATION

4

Rear anchors are installed in the end of the bumper. There is no precise mounting location since a variety of bumpers may be installed.

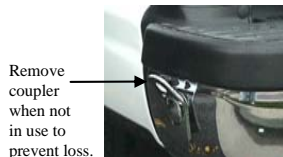
**IMPORTANT NOTE:** If the stock GM bumper is installed on this truck, The FM-CBB07 bumper brace kit **MUST BE INSTALLED**.

Installation is simple, requires no drilling and takes about 5 minutes. Instructions are included with the bumper brace kit.

1. Mounting location should be as flat & vertical as possible.
2. Be sure no moldings or bumper caps interfere with the removable coupler.
3. Check back side of selected mounting location to ensure adequate access for tightening nut.
4. Choose a location as far back as possible from the front edge of bumper while giving consideration to the other criteria listed above and center punch and drill a 1/8" pilot hole, then enlarge to 1/2".

Install Anchor Bolt with 2" fender washer, lock washer & nut.

*Flat edges of Anchor Bolt must be horizontal.*



## WARRANTY INFORMATION

### TERMS OF THE WARRANTY:

All products manufactured by Happijac Co. are warranted to the retail customer for one year from date of purchase against defects in material or workmanship. Any defective part(s) will be repaired or replaced (at Happijac's option) without charge, when returned transportation prepaid.

There are no other expressed warranties except as set forth above and any implied warranties are limited in duration to that of the expressed warranty. This warranty does not cover any damage due to misuse, negligence, or accidents. There is no warranty covering consequential damages, incidental damages, or incidental expenses including damage to property.

This warranty gives you specific legal rights. You may have other rights which may vary from state to state.

### WARRANTY CLAIMS:

All defective material must be returned to the factory via prepaid shipment. Upon inspection and determination of claims warranted, the factory will repair/replace the material at no charge and return the repaired/replaced material to the customer with delivery charges prepaid by Happijac via common carrier of Happijac's choosing. Upgrades and changes to shipping mode resulting in additional shipping costs shall be at customers expense.



505 N. Kays Drive, Kaysville UT 84037  
 Phone: (801) 544-2585  
 Fax: (801) 546-5241  
 Email: [happijac@happijac.com](mailto:happijac@happijac.com)  
 Web Address: [www.happijac.com](http://www.happijac.com)



## Frame Mount Camper Tiedown System

1

## Models: FT-CG07 & FT-CG07S

ALSO REQUIRED: USB-010 Stabilizer Bar & FM-CBB07 Bumper Brace

**IMPORTANT: READ THESE INSTRUCTIONS COMPLETELY BEFORE BEGINNING:**

These Instructions will show installation of one side only. Both sides install the same except where noted otherwise.

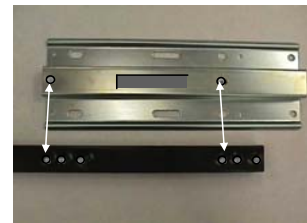
**CAUTION WARNING** While the FT-CG07 can be installed on any '07 or newer Chevrolet/GMC (New body style) truck model, the FT-CG07S **CANNOT** be installed on an extended cab with the rear swinging door.

**DOING SO WILL RESULT IN DAMAGE TO THE DOOR**

## FRONT ANCHOR INSTALLATION

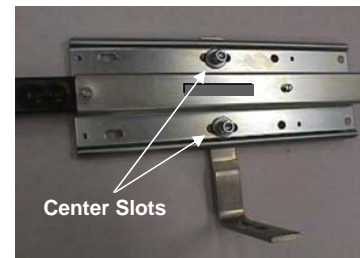
**STEP 1** – [Hardware Kit A] Attach both backing (guide) plates to stabilizer bar. Using #10 x 3/4" sheet metal screws. See diagrams below for specific location.

**Note:** The 4 large **round** holes in guide plate must be to the outer ends of the assembly at both ends.

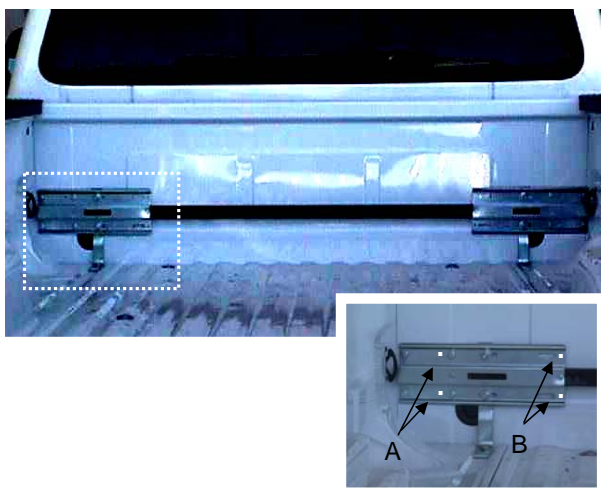


**STEP 2** – [Hardware Kit C] Attach frame brace to guide plate by inserting the flat head, square shouldered plow bolts through the countersunk hole in frame brace and securing with flat washer, split lock washer and nut. See diagrams below for specific locations.

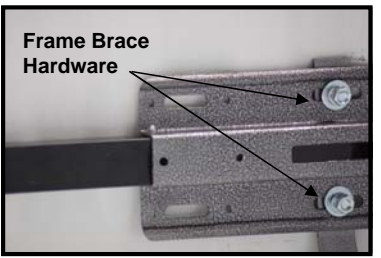
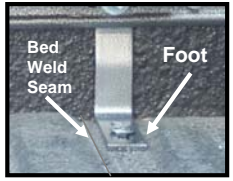
**Note: Do not tighten the nuts at this time. They will be tightened at a later step.**



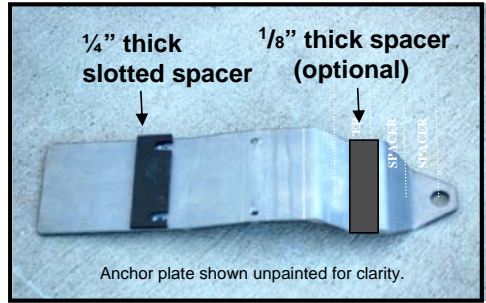
**STEP 3 – [Hardware Kit B]**  
 Center the assembly against front wall of truck. Select the screw location (A or B) where the silver/gray guide plate fits tightest against the front wall and install self drilling sheet metal screw provided. These screws are used to hold the assembly in place while drilling the mounting holes for the anchor plates. Generally only one screw per side is needed. **NOTE:** Screws in position A must be removed at a later step while screws in position B may stay in place.



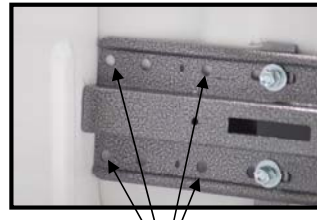
**STEP 7 –** Set the “L” shaped frame braces straight up and down, with the foot along the outside edge of the bed weld seam, then tighten the nuts holding the frame brace to the guide plate.



**STEP 4 - SPACER INSTALLATION**  
 Use double side adhesive strips to attach spacers at locations shown to back (non printed side) of brackets and/or guide plates



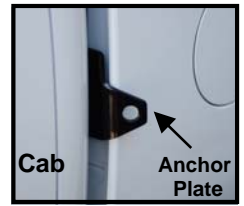
**STEP 5 –** Drill four 7/16” holes through guide plate and bed front wall using the four large round holes as a drill guide. These holes align with the threaded holes in the black anchor plate.



**Caution: Do not strike the cab with the drill bit.** Placing a thin piece of plywood or other material between the bed and cab may be helpful.

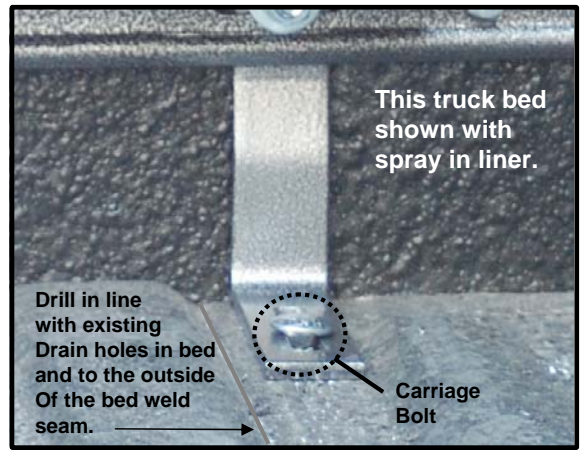
**STEP 6 – [Hardware Kit B]**  
 Remove the board (if used) from between bed & cab and insert the B lack anchor plate. Start (do not tighten) all 4 bolts through guide plate into threaded holes in black anchor plate.

Hint: The bolts will start easier if prior to installation on truck, you run the bolts or a 3/8 -24 tap through the threaded holes in the anchor plate to clear paint from the threads.



Once all bolts are started remove the screw in position A or B (if used) then tighten all 4 bolts.

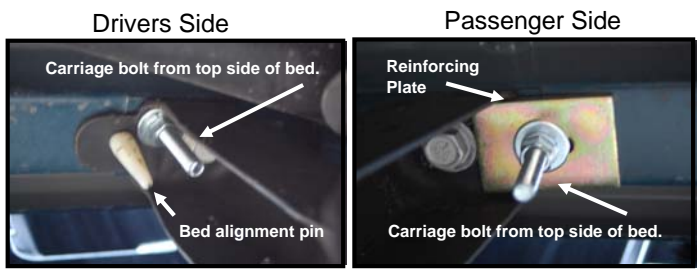
**STEP 8 – [Hardware Kit D]**  
 Drill 3/8” dia. Hole through frame brace foot, bed, and frame/bed cross member at location shown.  
 Make sure drill is as vertical as possible in all directions.



**STEP 9 –** Insert 5” Carriage bolt through hole and secure from beneath truck with hardware provided.

**NOTE:** The reinforcing plate is not required on the drivers side..

View looking up from beneath truck.



**THIS COMPLETES THE FRONT ANCHOR INSTALLATION**