



HAPPIJAC
A Division of Lippert Components Inc.

07-10 TUNDRA CAMPER TIEDOWNS

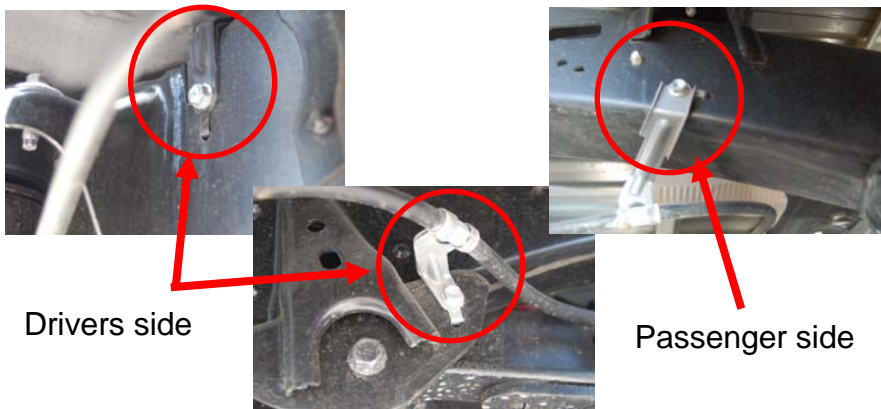
FRONT ANCHORS

Step 1 – Install the support brace to the bracket as shown below. Snug, but do not tighten, brace will be positioned later.

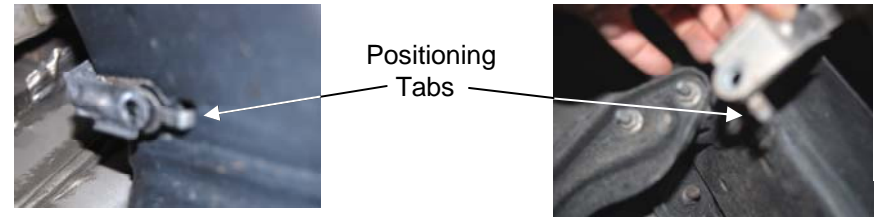


Be sure to connect proper end to bracket. This is the end with the sharper bend and only 1 nut at the end of the threaded rod section. Use the 1/2" long fine thread bolt supplied in the hardware kit..

Step 2 – Remove existing bolts attaching cable clamps to the frame at the locations shown below. (Save bolts, they will be reinstalled later)



3 – Clip the positioning tabs from the ends of the cable brackets with a pair of dikes or tin snips.



4. Set tie down bracket in place and install upper bolt. Place the tie down bracket between the cable bracket and frame and reinsert the bolt previously removed from this location.



Drivers Side
Shown

4.a – On the passenger side, use a 1" bolt, washer, lock washer & nut through the existing hole in the frame at this location.

5. Ensure that the bracket is sitting snug to the corner and straight then drill lower mounting hole through frame extension as shown. Note it may be necessary to clamp the bracket in place while drilling. Use 13/32 drill bit.



Drivers side shown

6. Position the frame end of the support brace between the frame and the cable bracket removed in step 2 then reinstall the cable bracket bolt.

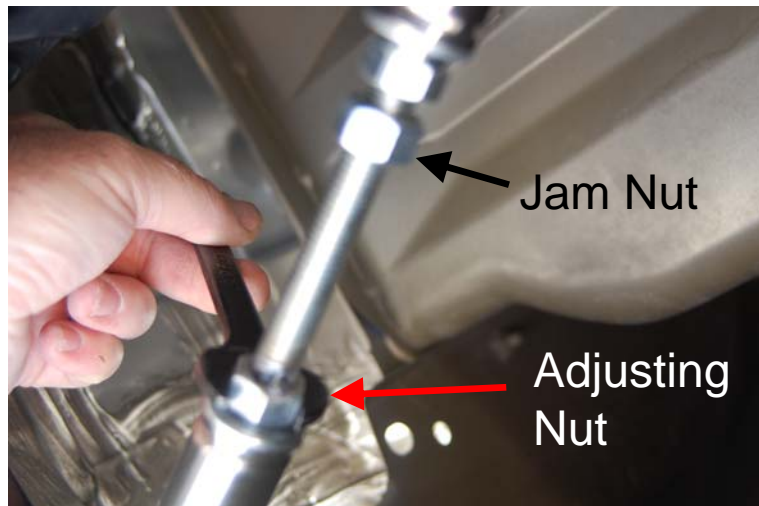


NOTE: It may be necessary to loosen the jam nut on the threaded portion of the support brace and lengthen or shorten the brace until the hole in the brace lines up with the hole in the frame.

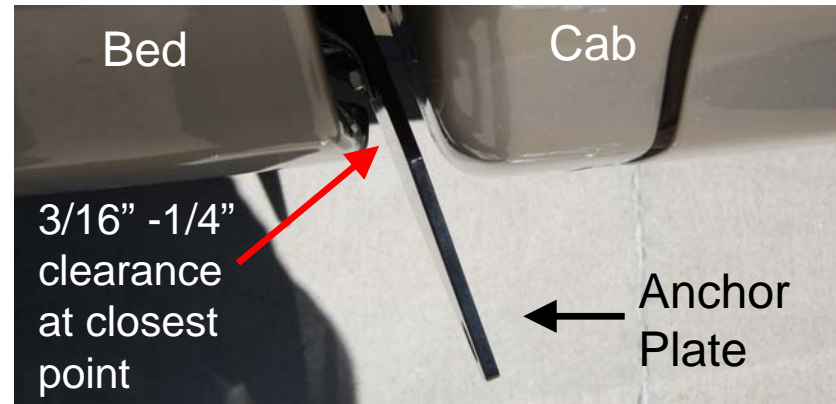
Passenger Side Shown

7. Tighten all hardware (do not over tighten and strip).

8. Once the front anchors and support brace are installed and tightened in place, the support brace can be adjusted for best fit. Loosen the jam nut and turn the adjusting nut at the opposite end of the treaded portion to lengthen or shorten the support brace.



8. Adjust support brace to the clearance shown below then tighten Jam Nut.



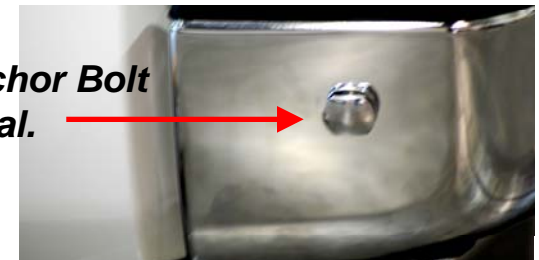
This completes the front anchor installation

REAR ANCHORS

NOTE: Rear anchors are installed in the end of the bumper. here is no precise mounting location since a variety of bumpers may be installed. The general guidelines are as follows:

1. Mounting location should be as flat & vertical as possible.
2. Be sure no moldings or bumper caps interfere with the removable coupler.
3. Check back side of selected mounting location to ensure adequate access for tightening nut.
4. Choose a location approx. 2/3 back from the front edge of the bumper. Center punch and drill a small pilot hole, then enlarge to 1/2".
5. Install Anchor Bolt with 2" fender washer, lock washer & nut.

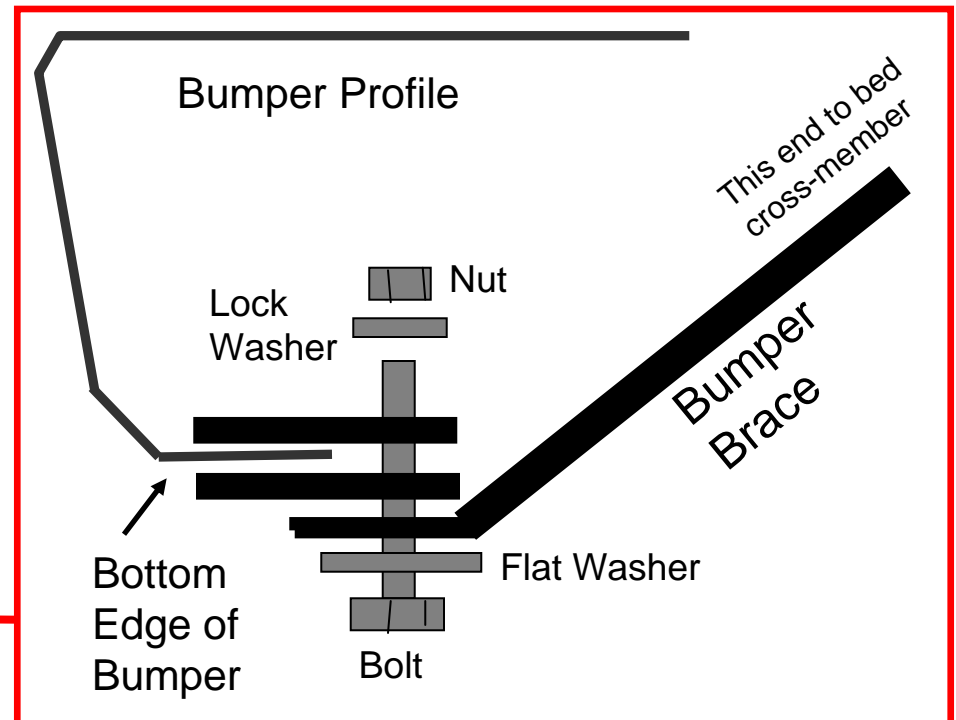
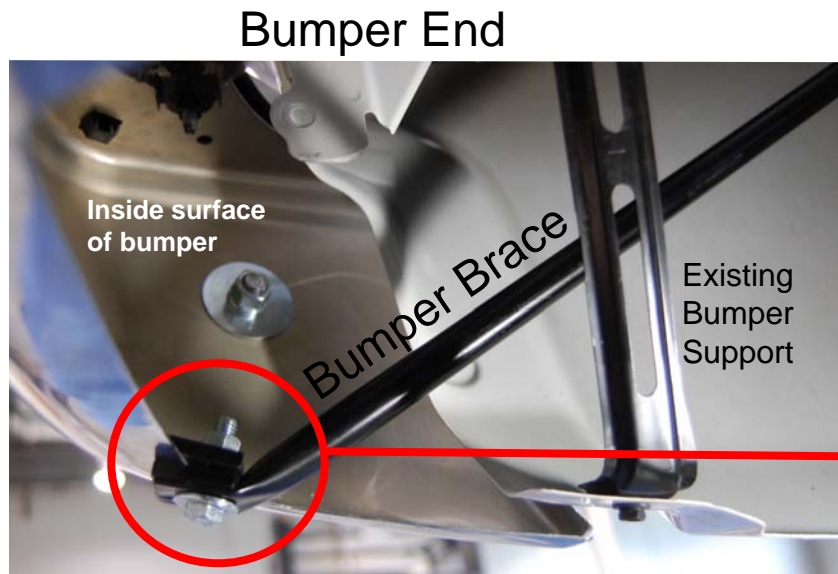
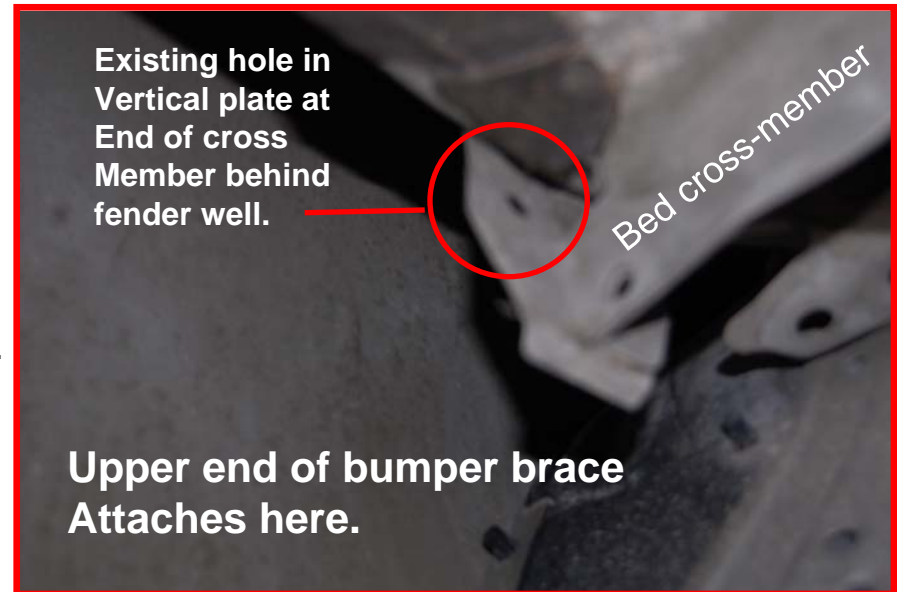
Flat edges of Anchor Bolt must be horizontal.



Mandatory Rear Bumper Brace

This brace is designed to reduce rotational torque on the rear bumper. The upper end bolts to existing hole in underside of bed cross member. At the lower Or bumper end of the brace, the lower edge of the Bumper is sandwiched between the heavy steel Plates supplied in this kit. See photos and illustrations..

The hardware kit supplied contains two longer and two shorter bolts. The longer bolts are used at the bottom (bumper) end and the shorter bolts at the upper (under bed) end of the bumper brace.



Technical support: 801-544-2585